

# Spark 2530

635mm (25") x 762mm (30")



## For Tags, Labels & Folding Carton

**EskoArtwork Spark 2530** specifically addresses the tag and label market as well as folding carton and small volume plate producers. It images a full size 25" x 30" / 635mm x 762mm plate of arbitrary thickness in just 15 minutes.

**The Spark 2530** comes with EasyClamp to securely hold down plates of any thickness on the vacuum drum.

Spark technology is a major breakthrough in enhanced output quality and consistency offering reduced overall process costs.

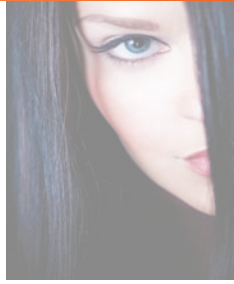
For use with **Dantex Torelief & Toreflex** Digital Plates  
**High Speed - High Quality - High Tech**

**DANTEX**  
Plates & more

*Spark® is a Registered Trademark of EskoArtwork. All rights reserved. All specifications are subject to alteration.*

**ESKO**  
artwork

YOUR PARTNERS IN WATERWASH PHOTOPOLYMER PLATE TECHNOLOGY



# Spark 2530

## Technical specifications

*Spark - Recommended for use with Dantex Digital plates and AquaFlex processing equipment*

The digital plate has a mask layer - sensitised to the Spark's laser light - on top of its surface. After imaging this mask takes the function of the traditional film negative. Due to the integration of the image carrier a digital plate has sharper image definition and steeper relief shoulders than conventional plates produced with film.

Image deterioration by UV light absorption and scattering in the traditional contacting through vacuum sheet and film is totally eliminated. Spark technology provides a major breakthrough in enhanced output quality, consistency and overall process cost reductions.

### Type of imager

External drum design  
Drum size: Max. plate format 25" x 30" / 635mm x 762mm or smaller  
Solid granite machine base  
High power Fibre Laser source, Class 1 laser

### Image quality

Screen rulings: up to 200lpi, depending on imaging resolution  
Halftone 1-99%  
Standard Optics: 2000ppi to 2540ppi  
HighRes Optics: 2540ppi to 4000ppi  
Variable resolution

### Engine control

~ Grapholas on Intel PC with Windows 2000  
~ The input file format in LEN or TIFF  
~ Compatible with all Spark family members

### RIP SW & input format

~ Optional FlexRIP 2530  
~ Adobe certified Postscript/PDF input channel with Esko screens (circular, square, round and elliptical)  
~ Additional EskoArtwork screens and proofing modules available

### Options

~ For steel-based letterpress plates (sizes up to 635 mm x 815 mm)  
~ Magnetic drum with customised register pin system for digital steel-base letterpress plates  
~ Magnetic vacuum drum for all digital polyester-base plates and steel-base letterpress plates

### Machine dimensions

Width: 63" / 1600mm  
Depth: 34.3 / 870mm (Loading table closed)  
46.5" / 1180mm (Loading table open)  
Height: 42.1" / 1070mm  
Weight: 2200lb. / 1000kg

### Plates

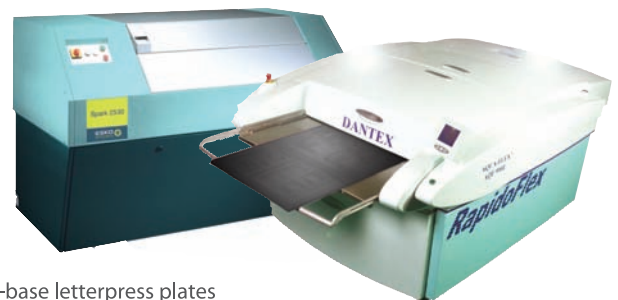
All digital photopolymer plates or ablative film or polyester plates  
Usable plate thickness: 0.030" to 0.155" / 0.76mm to 3.94mm

### Installation requirements

~ Separate vacuum and exhaust system included  
~ No external compressed air supply needed  
~ No external water cooling is required

### Electrics

230V/N/PE, 50/60Hz, 1.9 kVA (Imager)  
230V/N/PE, 50/60Hz, 1.2 kVA (Exhaust unit)



**Rapid** plate making  
**Excellent** resolution - **Superb** printed results