

Digital Flexo Suite for Packaging

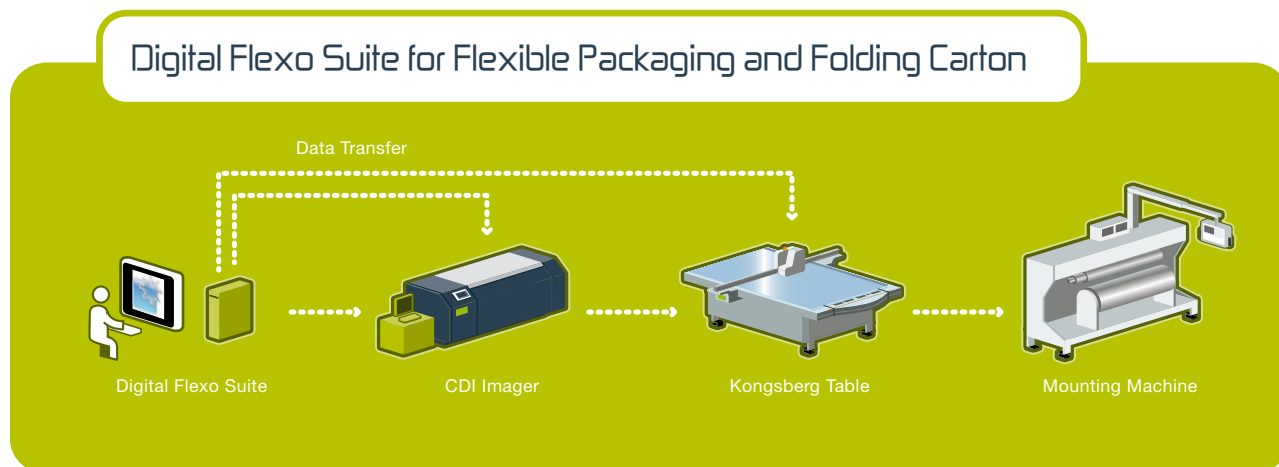


The Digital Flexo Suite for Flexible Packaging and Folding Carton is a powerful and easy-to-handle workflow automation for the Flexo plate making department. The software bundle contains tools to enhance the plate making efficiency and to reduce plate wastage. These tools include job imposition, customizable hot folders and innovative flexo plate cutting.

Workflow

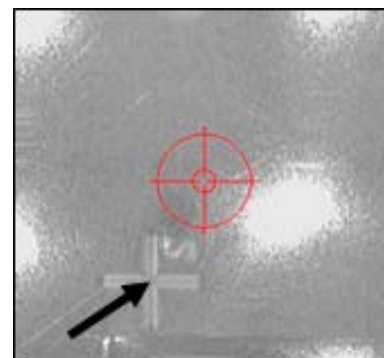
LEN or TIF files are uploaded into the Digital Flexo Suite and merged to reduce plate wastage.

The optimized plate and the cutting layout are simultaneously sent to the CDI and the Kongsberg XL-table. Both the CDI imaging file (LEN) and the Kongsberg cutting file (ACM) carry identical names and registration marks. These are automatically imaged on the flexo plate (for later identification and registration).



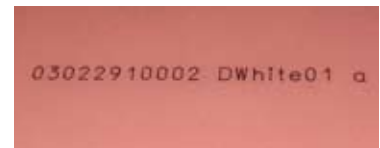
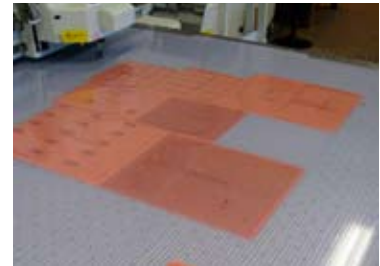
Accuracy and speed

The built-in camera (optional) allows fast and accurate registration of the images. Using its accuracy and speed, plates are perfectly cut for direct press mounting without monopolizing the operator's precious time. The washed out flexo plate can be labeled and cut by the Kongsberg table.



Benefits

- **Less plate wastage due to intelligent imposition and automated flexo plate cutting**
- **Significant error reduction**
- **Significant labor costs reduction**
- **Fast cliché identification in the plate and press department**
- **Precise cutting along arbitrary shapes for perfect post-mounting on sleeves (option)**



Hardware requirements (PC)

- Pentium 4 processor
- 1 GB RAM
- Network board
- Screen resolution of 1280 x 1024 pixels, true color
- CD ROM
- Microsoft Windows 2000 / XP / 2003 Server
- FTP server installed and activated
- Grapholas 5.5 MR2 Patch 7 on the CDI

Options (software)

- Tiff Output: output hardware imaging files in TIF format instead of LEN
- Staggered Cut: cut out a layout which defers from the LEN file for nested and staggered layouts

Kongsberg table

- Kongsberg XL20 (1680 x 1270 mm) or XL22 (1680 x 2190 mm)
- FlexiHead-C Tool head (camera registration)
- XL-Guide
- General purpose knife tool
- Fibre tip tool
- 2 vacuum zones
- Double density drill pattern (vacuum)
- 6kW vacuum pump
- PC