

Spark 4835

1200mm (48") x 900mm (35")



For Small/Medium volume Labels
& Folding Carton printers

EskoArtwork Spark 4835 specifically addresses small and medium volume label and folding carton flexo plate makers and converters. It is capable of imaging a full size 48" x 35" / 1200mm x 900mm plate or smaller, eliminating the need for full drum wrap-around.

The Spark 4835 comes with EasyClamp to securely hold down plates of any thickness on the vacuum drum. Spark technology is a major breakthrough in enhanced output quality and consistency offering reduced overall process costs.

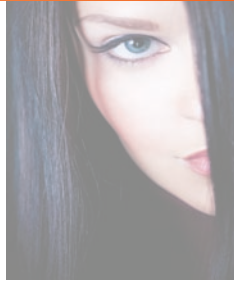
For use with **Dantex Torelief & Toreflex** Digital Plates
High Speed - High Quality - High Tech

DANTEX
Plates & more

Spark® is a Registered Trademark of EskoArtwork. All rights reserved. All specifications are subject to alteration.

ESKO
artwork

YOUR PARTNERS IN WATERWASH PHOTOPOLYMER PLATE TECHNOLOGY



Spark 4835

Technical specifications

Spark - Recommended for use with Dantex Digital plates and AquaFlex processing equipment

The digital plate has a mask layer - sensitised to the Spark's laser light - on top of its surface. After imaging this mask takes the function of the traditional film negative. Due to the integration of the image carrier a digital plate has sharper image definition and steeper relief shoulders than conventional plates produced with film.

Image deterioration by UV light absorption and scattering in the traditional contacting through vacuum sheet and film is totally eliminated. Spark technology provides a major breakthrough in enhanced output quality, consistency and overall process cost reductions.

Type of imager

External drum design
Drum size: Max. plate format 48" x 35" / 1200mm x 900mm or smaller
Solid granite machine base
High power Fibre Laser source, Class 1 laser

Image quality

Screen rulings: up to 200lpi, depending on imaging resolution
Halftone 1-99%
Standard Optics: 2000ppi to 2540ppi
HighRes Optics: 2540ppi to 4000ppi
Variable resolution

Plates

All digital photopolymer plates, ablative film or polyester-base Letterpress plates. Usable plate thickness: 0.030" to 0.255" / 0.76mm to 6.35mm. Sizes up to: 48" x 35" / 1200mm x 900mm (or smaller)

Options

~ Magnetic drum with customised register pin system for digital steel-base letterpress plates
(Sizes up to 48" x 35" / 1200mm x 900mm or smaller)
~ Magnetic vacuum drum for all digital polyester-base plates and steel-base letterpress plates

Machine dimensions

Width: 82.7" / 2100mm
Depth: 43.3" / 1100mm (Loading table closed)
66.9" / 1700mm (Loading table opened)
Height: 45.7" / 1160mm
Weight: 3300lb. / 1500kg

Installation requirements

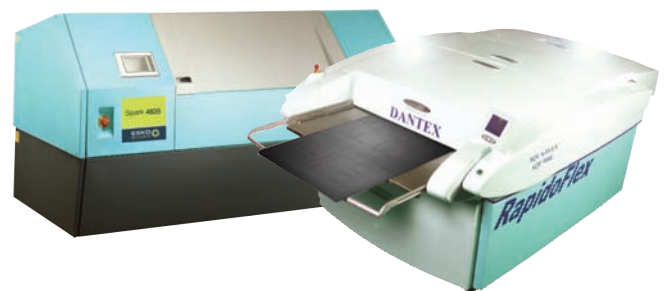
~ Separate vacuum and exhaust system included
~ External compressed air device supplied with the system
~ No external water cooling is required

Electrics

230V/N/PE, 50/60Hz, 2.9 kVA (Imager)
230V/N/PE, 50/60Hz, 1.2 kVA (Exhaust unit)
230V/N/PE, 50/60Hz, 0.75 kVA (Air compressor)

Engine control

~ Grapholas on Intel PC with Windows 2000
~ The input file format in LEN or TIFF
~ Compatible with all CDI family members



Rapid plate making
Excellent resolution - **Superb** printed results