



AQF - 7900 L/F 700mm(27") x 900mm(35") *Dantex AquaFlex Combination Unit*



Main Features:

- ~ User-friendly touchscreen programming interface
- ~ Exposure/post-exposure drawer
- ~ Light integrator for optimum coverage
- ~ Computer controlled auto-reversing plateholder
- ~ Permanent adhesive plateholder fitted as standard
- ~ Time controlled pulsed hot air dryer
- ~ Suitable for stand-alone or plumbed installation
- ~ Detack drawer (Flexo model only)

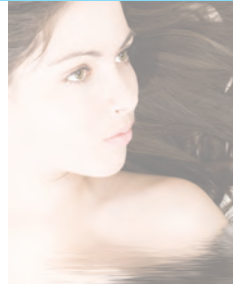
For use with Torelief, Aquaflex & Rapidoflex plates
High Speed - High Quality - High Tech

www.dantex.com

DANTEX
Plates & more

YOUR PARTNER IN WATERWASH PHOTOPOLYMER PLATE TECHNOLOGY

AquaFlex combination system for photopolymer plate making



Specifications

Power:

400V – 50/60 Hz 3 Phase N + E

Maximum plate size :

Dimensions: 700mm x 900mm
27" x 35"

Unit dimensions

1480mm x 1300mm x 1200mm (W x D x H)
58.3" x 51.2" x 47.3"

Net weight

475 kg / 1047lb

Operating weight

585 kg / 1290lb

Letterpress Unit

UVA Exposure, Washout unit
Post exposure, 2 x Dryer drawers

Flexo Unit

UVA & UVC Exposure + Post exposure,
Washout, 2 x Dryer drawers + Detack

The information in this document is based on our present knowledge and experience. Due to the multitude of factors influencing the processing application of our products it does not release the user from own testing and experimentation.

Nor does it imply any legally binding assurance concerning specific properties of the products or suitability for a particular application. The responsibility of observing any pertinent industrial property rights, laws and regulations rests with the user. Subject to technical change without notice.

AQF - 7900 L/F

Excellent Resolution Superb printed results

Environmentally Friendly Water wash Processors



High Quality – High Speed – High Tech

DANTEX
Plates & more

Aquaflex® is a Registered Trademark Dantex Graphics Limited. Aquaflex equipment is manufactured in the United Kingdom by Dantex Graphics Limited.

YOUR PARTNER IN WATERWASH PHOTOPOLYMER PLATE TECHNOLOGY